

HERITAGE
ROOMS

PYRMONT
ROOMS

JACKALBERRY
SUSSEX ST. SYD

— LOBBY —
LOUNGE

KING & SUSSEX
ROOMS

WHARF
ROOM

ZEPHYR



**THE UPPER
DECK**

MARITIME
BALLROOM

GRAND
BALLROOM

DUNDEE ARMS
EST. 1860





THE **PERFECT** FUSION

Located in the heart of Sydney's central business district, Hyatt Regency Sydney boasts an array of exceptional food and dining experiences for guests to enjoy.

Experience local produce at Sailmaker Restaurant, serving Sydney's freshest seafood and locally sourced produce. Ascend above the city streets to Zephyr Sky Bar and sip on signature cocktails, set against a backdrop of stunning sunsets.

For a more relaxed experience, retreat to one of Sydney's oldest surviving pubs - The Dundee Arms for a beer and pub favourites. Or experience an urban oasis, with greenery and velvet booths, transporting guests with flavours from every corner of the globe, at Jackalberry Bar.

A tranquil respite for guests and locals alike is Lobby Lounge, serving timeless classics and a unique high tea experience with an Australian twist - Gin High Tea.



DIRECTOR OF FOOD & BEVERAGE

Nitin Kumar

Joining Hyatt Hotels and Resorts in 2000 in Delhi, Nitin has worked as a Chef throughout India, Australia and New Zealand and as Director Of Culinary at Hyatt Hotel Canberra. Nitin now calls Hyatt Regency Sydney home as Food & Beverage Director and has a Bachelor Degree in Commerce and Diploma in Hotel Management and Catering Technology.

Managing a team of over 150 across five bars and restaurants, and all events at the hotel, Nitin has a passion for nurturing the next generation of talent and delivering world-class events and experiences for his clients.



EXECUTIVE CHEF

Sven Ullrich

Chef Sven Ullrich joined Hyatt Hotels and Resorts in 2000 as Chef de Cuisine at Hyatt Regency Sanctuary Cove. Since then he has travelled the globe, working in kitchens throughout Germany, Tokyo, Hong Kong and the U.S.

Now over two decades later, Chef Sven leads a culinary team of over 75 at Australia's largest upscale hotel, Hyatt Regency Sydney. His menus are simple, refined and full of flavour, and reflect his passion for sustainably-sourced produce.



VENUE SALES MANAGER

Tia Li

Graduating from The Hotel School Australia (SCU) in May 2019 with a Master's Degree in International Tourism and Hotel Management, Venue Sales Manager, Tia is the key driver of venue sales for all five bars and restaurants at Hyatt Regency Sydney.

Tia is on hand to assist clients in planning and executing a range of events - corporate cocktail, dinners and social events at Zephyr Sky Bar, Jackalberry Bar, The Dundee Arms Pub, Sailmaker Restaurant and Lobby Lounge.



ZEPHYR





Perched on Level 12 of Hyatt Regency Sydney, Zephyr is a luxury sky bar with stunning sunsets and unrivalled views of Darling Harbour and beyond.

Nautically-inspired décor sets the scene for discerning tastemakers and sumptuous sippers. With signature cocktails and one of Sydney's most extensive spirit lists, Zephyr is proud to be one of Sydney's favourite rooftop bars, awarded Hotel Bar of the Year in 2020, 2021 and 2022. (HM Magazine, Spice Magazine)

At the helm of Zephyr's award-winning team is Venue Manager, Mohit Kumar – leading a team of mixologists (the masters behind Zephyr's most known and loved cocktails), hosts and bartenders, all ready to take you on a journey, above it all at Zephyr.

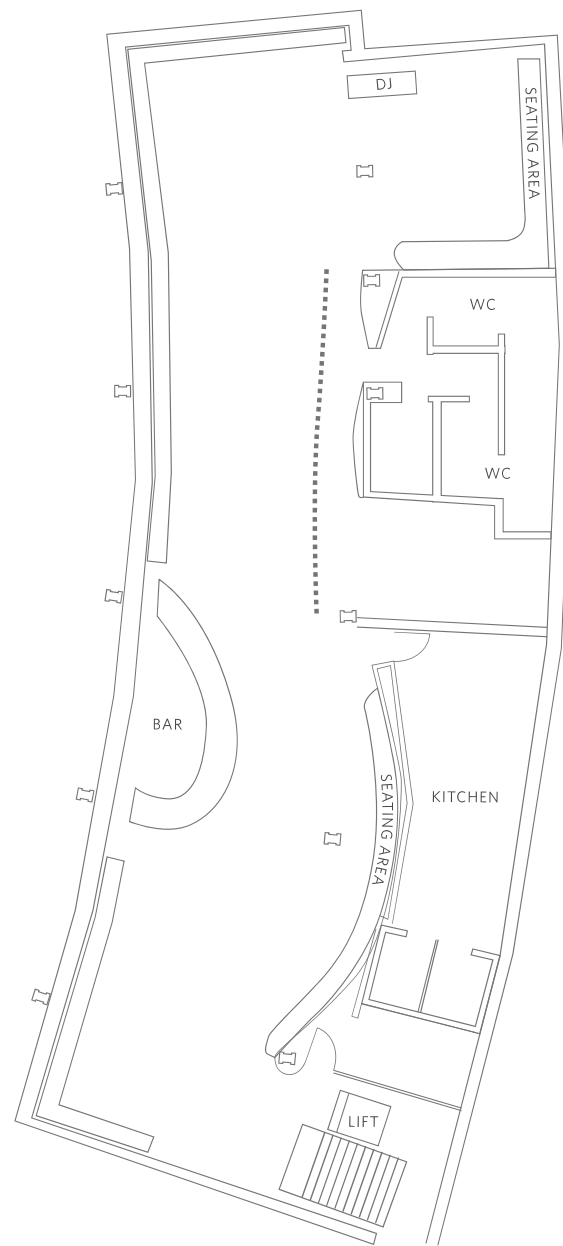
Zephyr is available for corporate functions, private parties and soirees, intimate and large gatherings, and exclusive, private use.



Zephyr Sky Bar
161 Sussex Street, Sydney NSW 2000
Level 12



zephyrbarsydney.com
[Example Group Menu](#)



Venue available for
Exclusive and semi-private hire.

Zephyr Capacities

Seated: 150 pax
Cocktail: 260 pax

*Sections of the bar are
available to book for
large groups*



JACKALBERRY
SUSSEX ST. SYD



Beyond the bustle of Sydney's inner-city jungle, an adventurer's sanctuary awaits. At Jackalberry Bar, far-flung cultures mingle in a celebration of discovery. Here, the beauty and diversity of our world is reflected in globally inspired dishes, drinks and décor – an idyllic hideaway for wanderers seeking respite.

We've taken some of the tastiest plates from around the world to take you on a food menu adventure. Our immersive cocktail menu features flavours from different continents, and our impressive and extensive drinks menu has a premium selection of beers, wine, spirits and inventive Signature Cocktails.

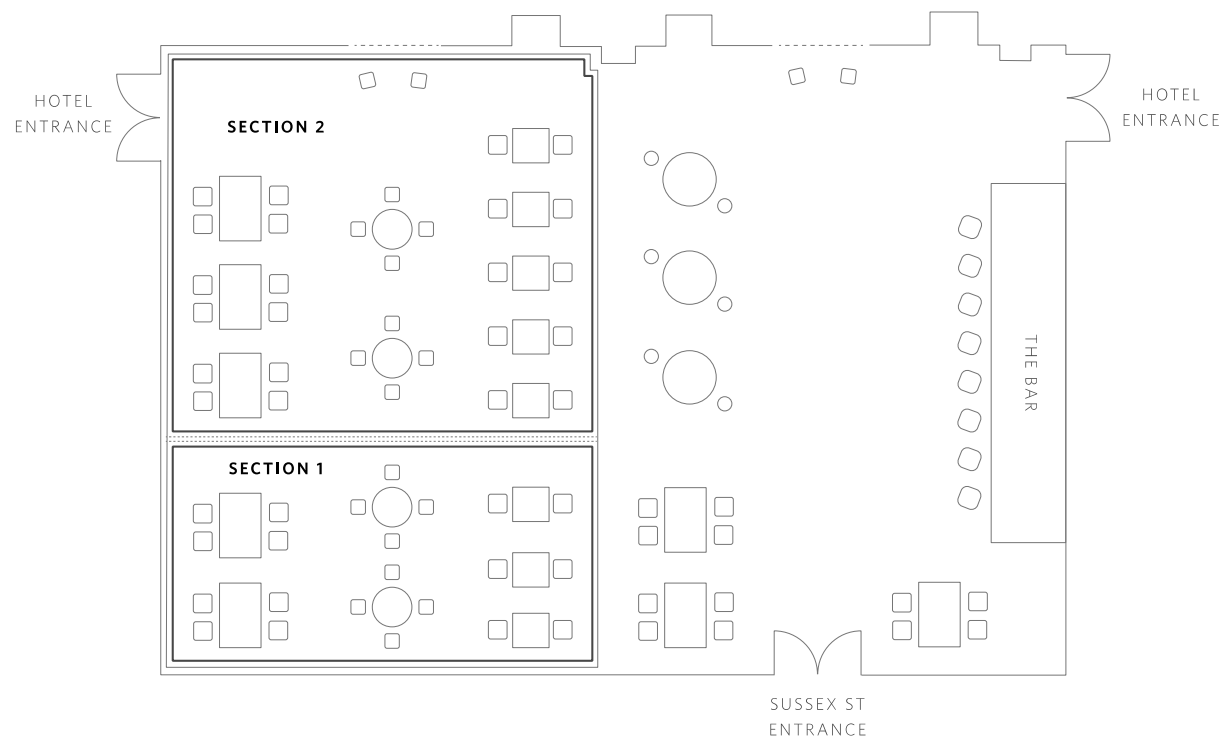
An intimate and stylish event space in heritage listed surrounds, Jackalberry Bar is ideally suited to cocktail parties, networking events, post-conference drinks, product launches, breakfast sessions and fundraisers.



Jackalberry Bar
161 Sussex Street,
Sydney NSW 2000
Ground Floor



jackalberry.com.au
[Example Group Menu](#)



CAPACITY

Seated: 84
Cocktail: 110

**Available for exclusive hire*

SECTIONS

Section 1: 20
Section 2: 40 (seating and standing)



SAILMAKER



Renowned for its sail-making business in the late 1800s, Sussex Street is a vibrant piece of Darling Harbour's history. Bringing to life the area's rich heritage through its fresh produce, abundant seafood selection and harbourside location, Sailmaker offers a truly local dining experience.

Our culinary team work closely with fisherman and farmers throughout New South Wales to create a simple, yet refined menu that celebrates some of Australia's best produce.

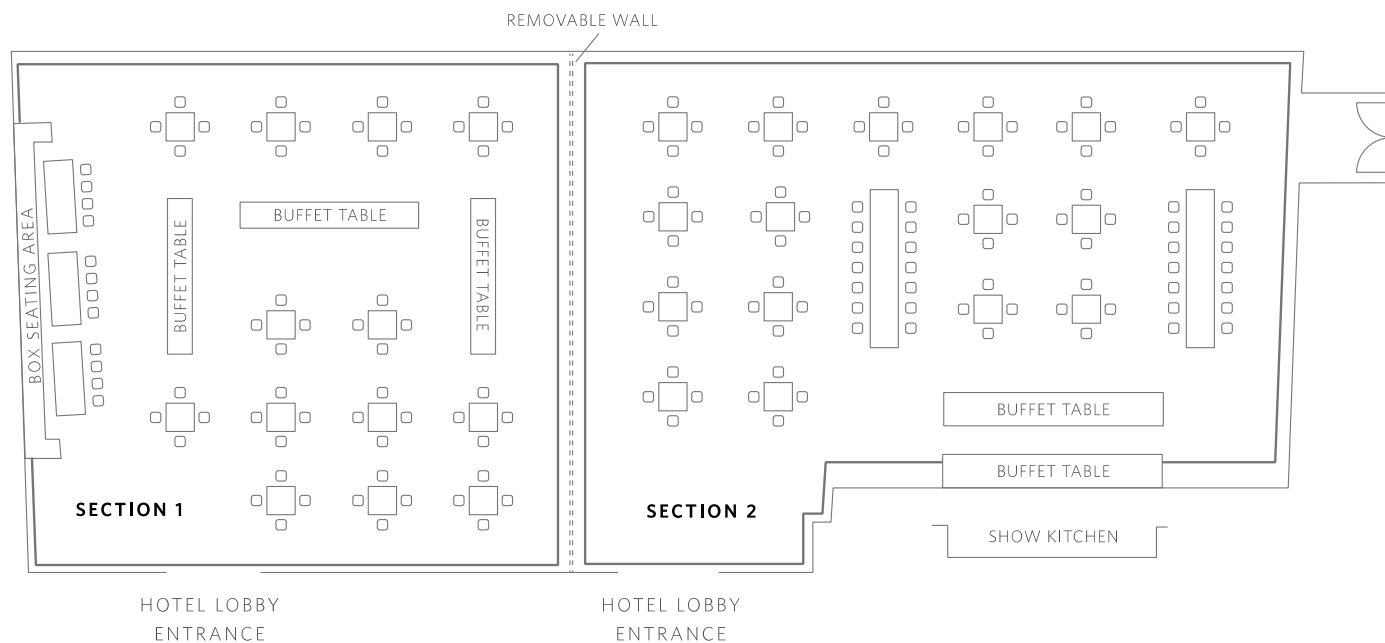
Sailmaker Restaurant caters for corporate functions and private events. Offering the opportunity for clients to work closely with the Chef de Cuisine to create customised and tailored made menus adhering to the wants and needs of the event.



Sailmaker Restaurant
Lobby Level, 161 Sussex Street,
Sydney NSW 2000

Sailmaker Restaurant





CAPACITY

Seated: 272

**available for exclusive hire*

SECTIONS

Section 1: 130
Section 2: 142



—... LOBBY ...—
LOUNGE



Located in the heart of the hotel, Lobby Lounge offers a place for old friends and new to meet, connect and relax. An intimate space wrapped in nautical rope, Lobby Lounge pays homage to the hotel's harbourside location while exuding a casual elegance.

With lights down low, sip on a timeless classic, or drink a drop from the extensive wine list. With tipples from near and far, matched with a share-style menu of local produce, Lobby Lounge is a tranquil saloon for guests and locals alike.

Lobby Lounge is available for private gatherings and events.



Lobby Lounge

Lobby Level, 161 Sussex Street,
Sydney NSW 2000

[Lobby Lounge](#)
[Lobby Lounge Menu](#)





Gin
High Tea
AT HYATT REGENCY SYDNEY





Gin High Tea brings an Australian, botanical twist to the ever popular, High Tea, a unique experience, showcasing local gins and Australian native flavours.

Guests can expect sweet and savoury delicacies like tempura prawns, gin infused scallops and delicious warm scones served with fig-eucalyptus jam and clotted cream. And be treated to a smorgasbord of treats from the botanical dessert table, as our Chef 's take you on an immersive culinary experience.

Gin High Tea at Hyatt Regency Sydney is available for large group bookings on Saturdays only (up to 55 guests) and exclusive and private events, with a personalised experience tailored for you.



Gin High Tea

Lobby Lounge, Lobby Level,
161 Sussex Street, Sydney NSW 2000

[Gin High Tea at Hyatt Regency Sydney](#)
[Gin High Tea Menu](#)



DUNDEE ARMS

EST. 1860



The Dundee Arms Pub has long been a gathering place for sailors and Sydneysiders alike. Since it's opening in 1860 Dundee Arms has been a prominent part of the overwhelmingly industrial maritime suburb, Darling Harbour. Throughout the 1860s and 70s Dundee Arms was a thriving hub for sailors who docked in the harbour and the city's working class.

Today Dundee Arms is a piece of history, an icon of Sussex Street, a cosy Australian Pub offering your favourite pub classics and cold beers

Semi-private spaces are available for small parties and gatherings, indoor and outdoor, or takeover the pub with exclusive hire. The outdoor beer garden features two large screens, perfect for sporting events and iconic television moments.

Ideal for corporate celebrations, product launches and private events.



Dundee Arms
161 Sussex Street,
Sydney NSW 2000
Ground Floor

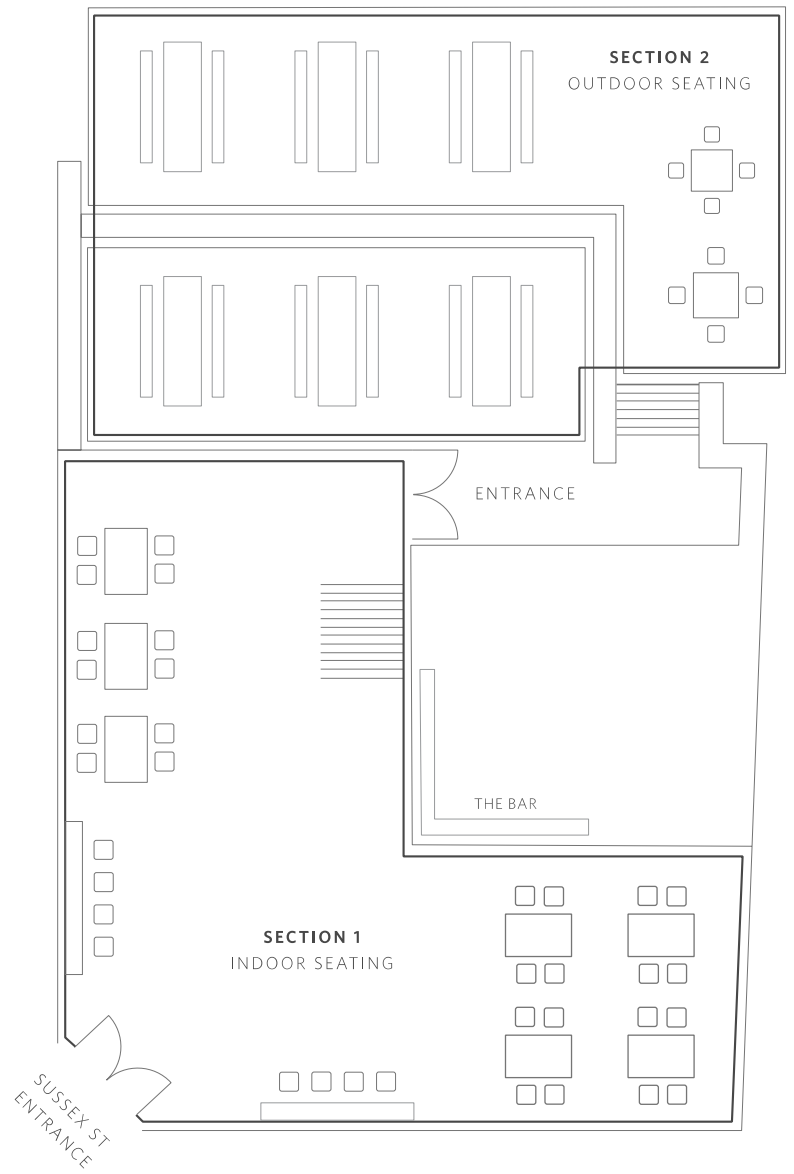


[The Dundee Arms Pub](#)
[Food and Drink Menu](#)



DUNDEE ARMS

EST. 1860

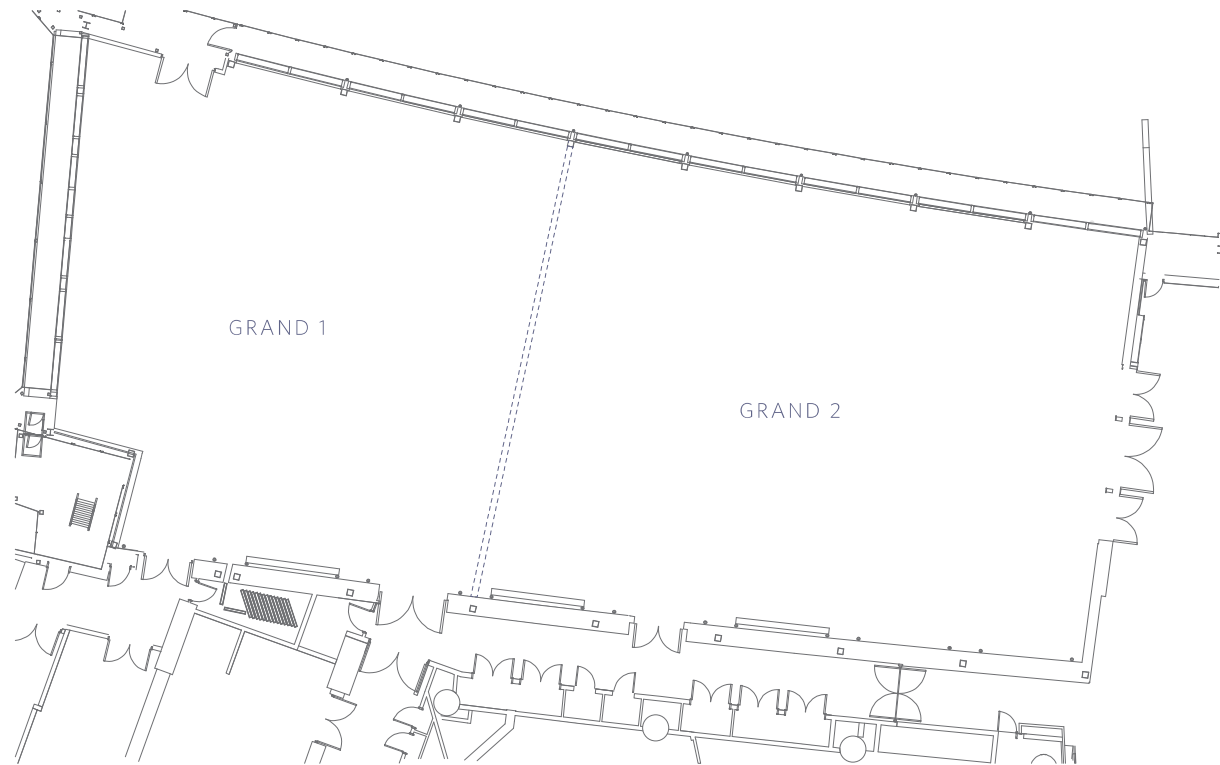


CAPACITY

Indoor Seating: 35
Outdoor Seating: 80



GRAND
BALLROOM



With 850 square meters of space, the Grand Ballroom is the ultimate waterfront venue. Offers the flexibility to hire as one large space or separate into different formats / spaces.

Grand Ballroom

Theatre: 1000
 Classroom: 552
 Rounds of Ten: 750
 Cocktail: 1000
 Cabaret: 520
 Booth 3x3: 42
 Booth 3x2: 45

Grand 1

Theatre: 350
 Classroom: 240
 Rounds of Ten: 250
 Cocktail: 450
 Cabaret: 200

Grand 2

Theatre: 550
 Classroom: 300
 Rounds of Ten: 400
 Cocktail: 550
 Cabaret: 320



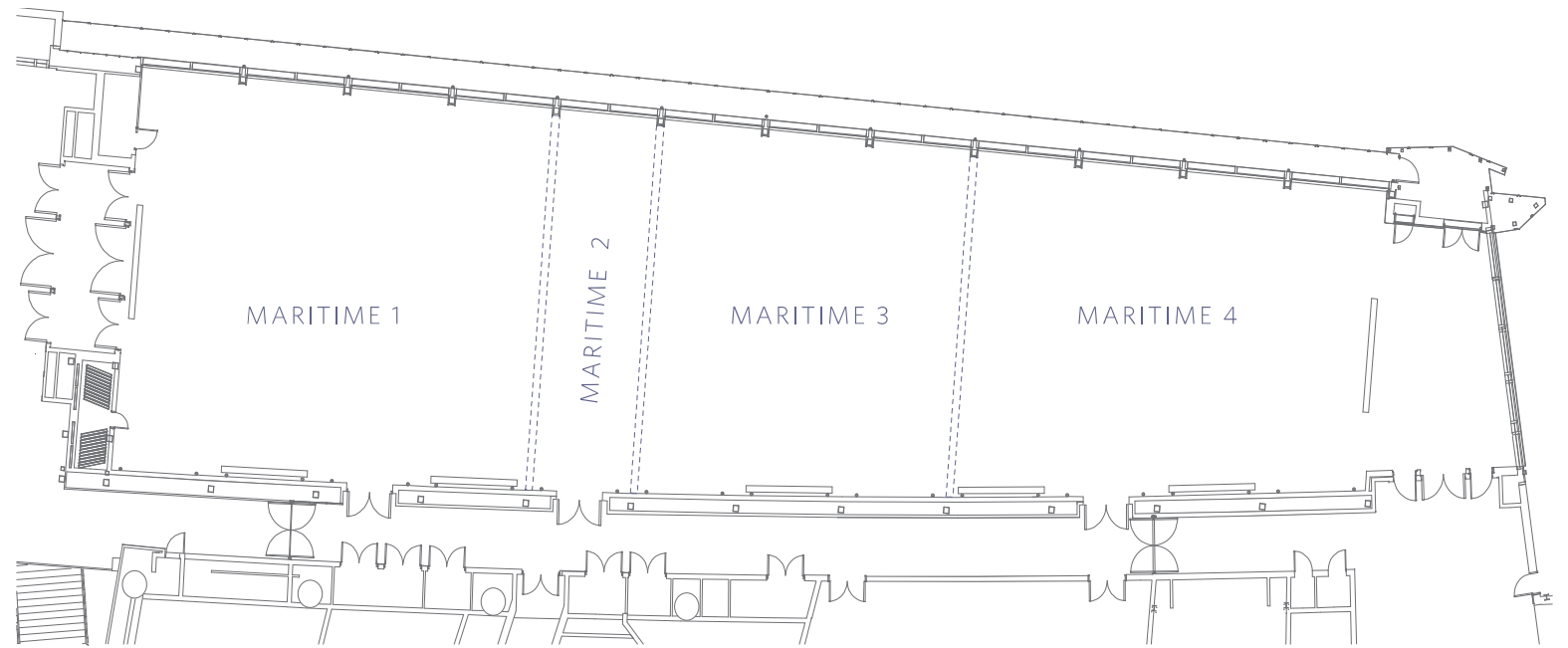
Grand Ballroom

161 Sussex Street, Sydney NSW 2000
 Mezzanine Level



A wide-angle photograph of a large, modern ballroom. The room is filled with numerous round tables, each covered with a white tablecloth and set with white plates, silverware, and glassware. Each table is decorated with a centerpiece of white and yellow flowers. The room features a dark carpet with a vibrant, multi-colored geometric pattern in shades of blue, purple, and pink. Large windows on the left side offer a view of an outdoor area with a fountain and a large, illuminated dome structure. The ceiling is high and features a complex arrangement of lights, including long, horizontal strips of warm-toned lights and a large, dense cluster of small lights. A blue diagonal graphic element is present in the bottom-left corner.

MARITIME
BALLROOM



Whether you're planning an intimate wedding or a corporate conference, the Maritime Ballroom can be tailored to suit your needs. Offers the flexibility to hire as one large space or separate into different formats/spaces.

Maritime Ballroom

Theatre: 1000
 Classroom: 516
 Rounds of Ten: 700
 Cocktail: 1000
 Cabaret: 552
 Booth 3x3: 40
 Booth 3x2: 60

Maritime 1

Theatre: 300
 Classroom: 168
 U-Shape: 45
 Rounds of Ten: 180
 Cocktail: 350
 Cabaret: 144
 Booth 3x2: 22

Maritime 2

N/A

Maritime 3

Booth 3x2: 20

Maritime 4

Theatre: 300
 Classroom: 168
 U-Shape: 45
 Rounds of Ten: 280
 Cocktail: 350
 Cabaret: 144
 Booth 3x2: 22



Maritime Ballroom

161 Sussex Street, Sydney NSW 2000
 Mezzanine Level



THE UPPER DECK

LEVEL 11





Located on Level 11, The Upper Deck is a 350 sq m fully customisable indoor/outdoor space, suitable for cocktail style events, meetings, medium conferences and gatherings of up to 200 guests.

A truly unique venue and a rarity in Sydney's meeting and event landscape is the 40 sq m outdoor terrace, with the capacity to host up to 40 guests under the city lights whilst overlooking the glistening water of Sydney's Darling Harbour.

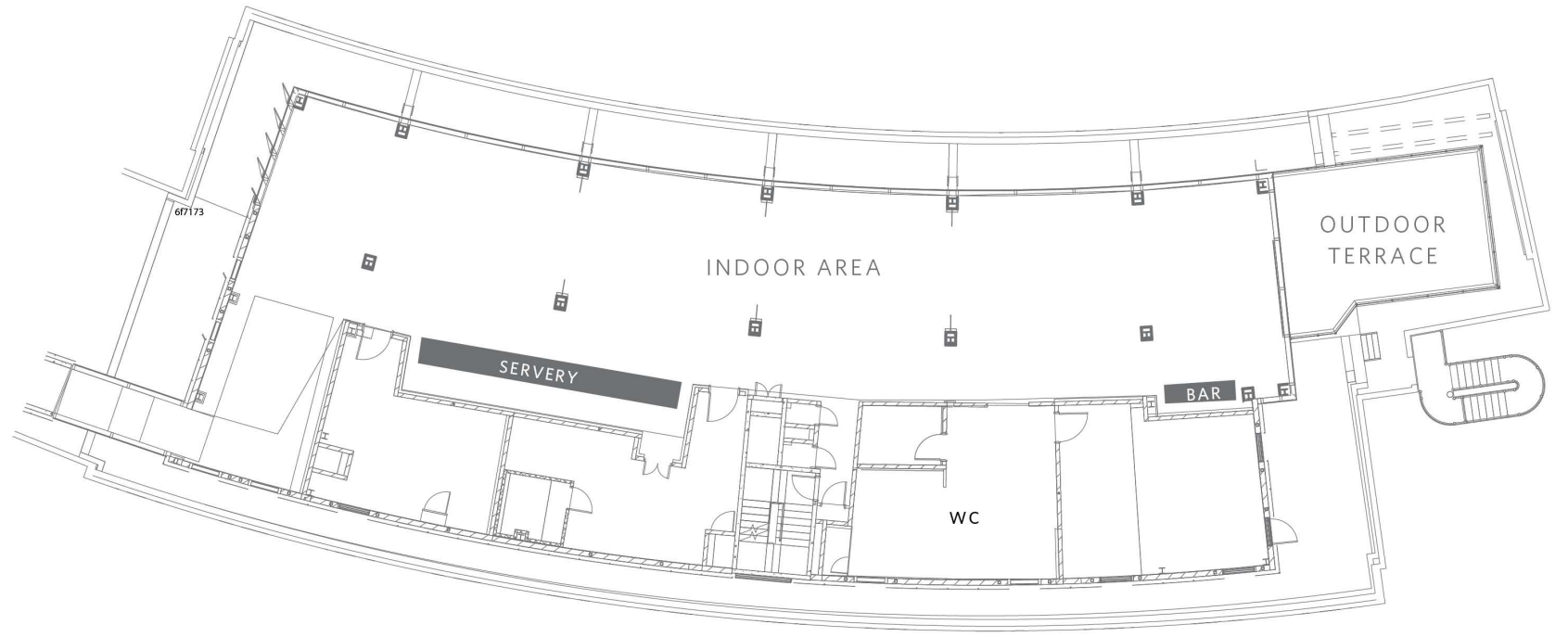
Set menu catering and beverage packages are available with the option to curate personalised and customised food experiences.

World-class AV options including 4x75" mobile and wireless TV monitors, lectern, internal and external speaker and lighting system are available at an additional and can be customised between each space to suit your event.



The Upper Deck

The Upper Deck 161 Sussex Street,
Sydney NSW 2000
Level Eleven



With 360 square meters of space, the Upper Deck indoor/outdoor space is suitable for cocktail-style events, meeting and gatherings. Offers the flexibility to hire as one large space or separate into different formats/spaces.

The Upper Deck

Capacity: 200
360 sq m
3,874 sq ft

Indoor Area

Capacity: 200
312 sq m
3,358 sq ft
39m x 8m

Outdoor Terrace

Capacity: 40
48 sq m
516 sq ft
8m x 6m



The Upper Deck

The Upper Deck 161 Sussex Street,
Sydney NSW 2000
Level Eleven



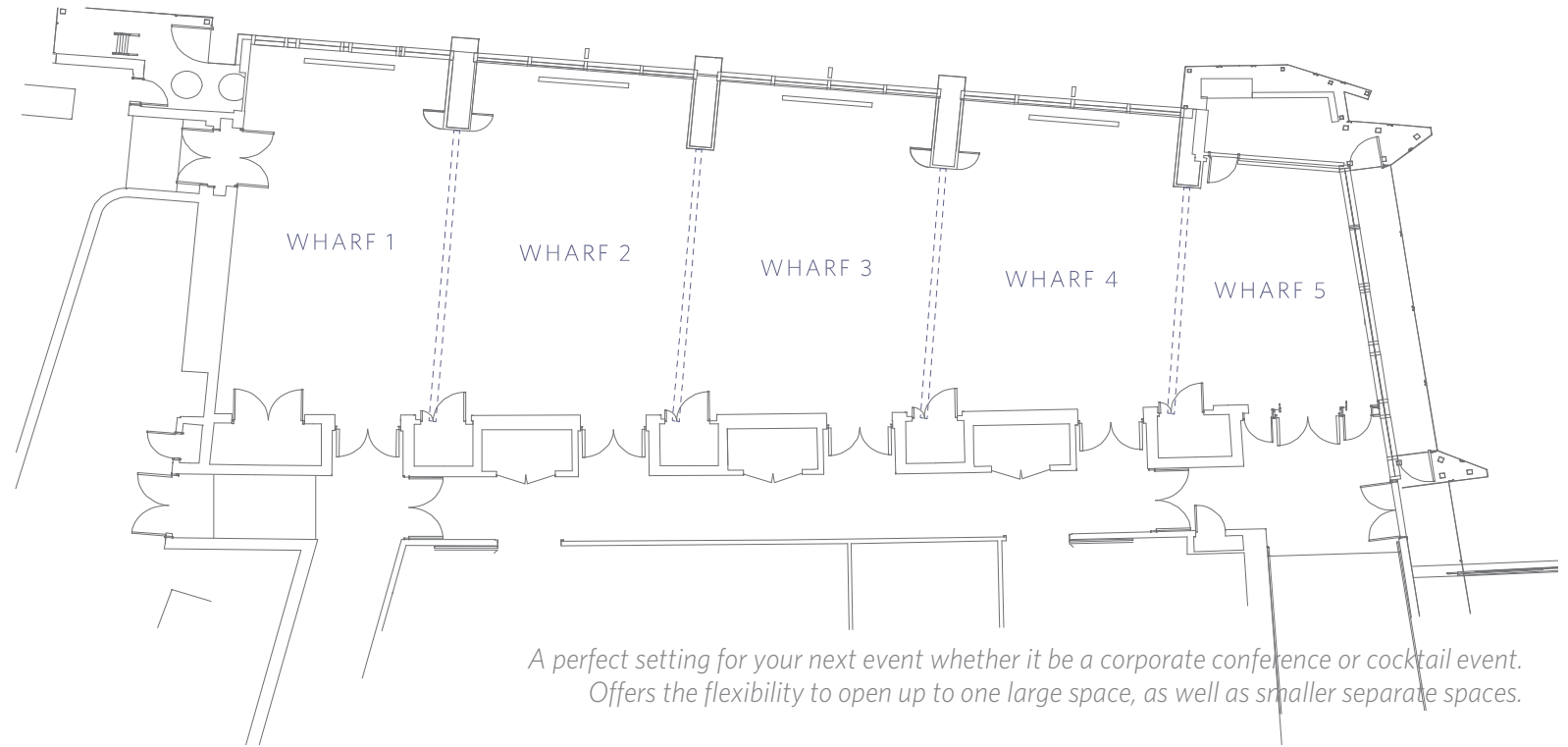
HYATT REGENCYSM
SYDNEY

HYATT REGENCY

GENCY

WHARF

ROOM



*A perfect setting for your next event whether it be a corporate conference or cocktail event.
Offers the flexibility to open up to one large space, as well as smaller separate spaces.*

Wharf Room

Theatre: 300
Classroom: 189
Rounds of Ten: 210
Cocktail: 350
Cabaret: 160

Wharf 1

Theatre: 70
Classroom: 33
U-Shape: 27
Rounds of Ten: 50
Cocktail: 80
Cabaret: 32
Boardroom: 24

Wharf 2

Theatre: 70
Classroom: 36
U-Shape: 24
Rounds of Ten: 50
Cocktail: 80
Cabaret: 32
Boardroom: 24

Wharf 3

Theatre: 70
Classroom: 36
U-Shape: 24
Rounds of Ten: 50
Cocktail: 80
Cabaret: 32
Booth 3x2: 24

Wharf 4

Theatre: 70
Classroom: 36
U-Shape: 24
Rounds of Ten: 40
Cocktail: 80
Cabaret: 32
Booth 3x2: 24

Wharf 5

Boardroom: 12



Wharf Rooms

161 Sussex Street, Sydney NSW 2000
Lobby Level



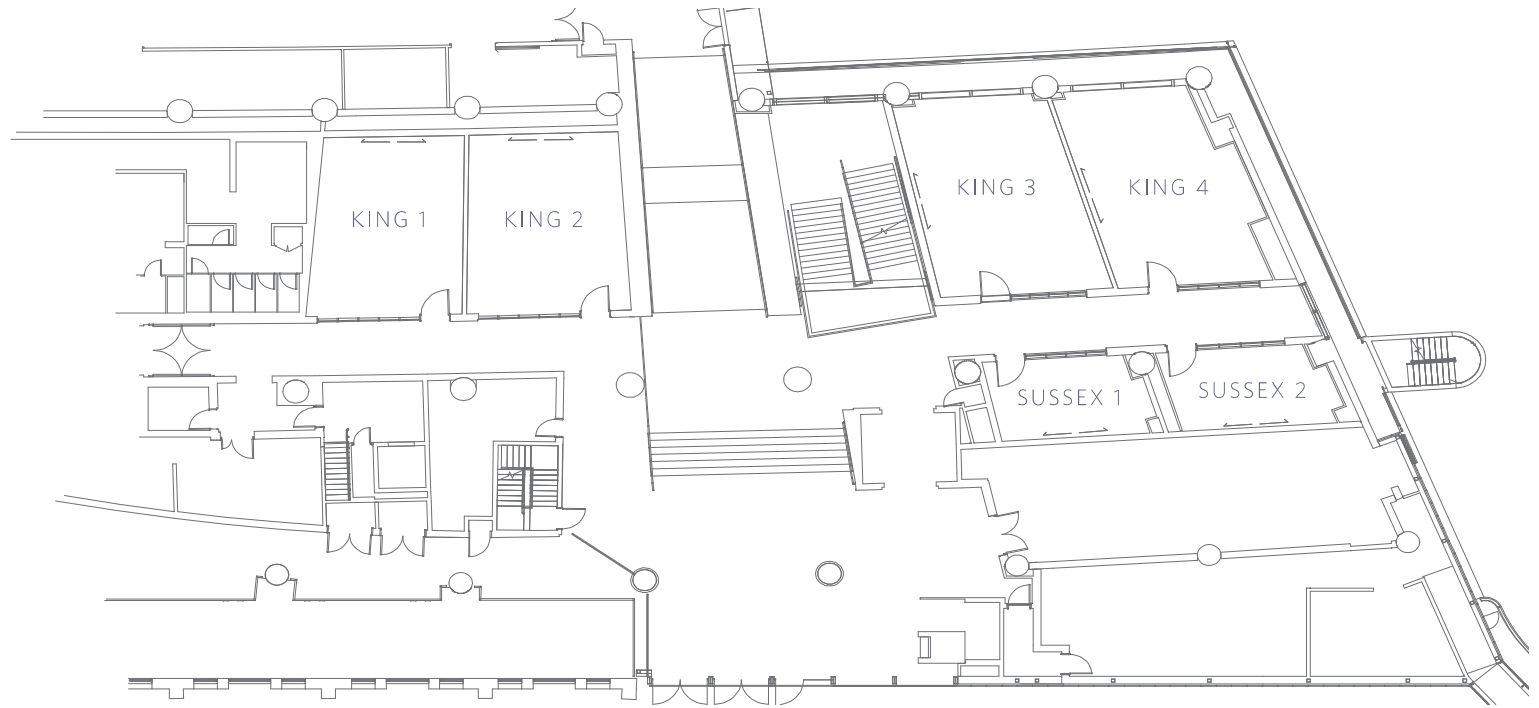


 **HYATT REGENCY**
SFORES

KING
ROOMS



SUSSEX
ROOMS



The King Rooms offer the perfect space for large board meetings or used as a breakout space. Sussex Rooms offers an intimate setting for smaller meetings.

King Room 1

Theatre: 60
 Classroom: 24
 U-Shape: 18
 Rounds of Ten: 40
 Cocktail: 60
 Cabaret: 32
 Boardroom: 18

King Room 2

Theatre: 60
 Classroom: 24
 U-Shape: 18
 Rounds of Ten: 40
 Cocktail: 60
 Cabaret: 32
 Boardrooms: 18

King Room 3

Theatre: 60
 Classroom: 30
 U-Shape: 18
 Rounds of Ten: 40
 Cocktail: 60
 Cabaret: 32
 Boardrooms: 18

King Room 4

Theatre: 0
 Classroom: 30
 U-Shape: 18
 Rounds of Ten: 40
 Cocktail: 60
 Cabaret: 32
 Booth 3x2: 18

Sussex Room 1

Boardroom: 12

Sussex Room 2

Boardroom: 12



King & Sussex Rooms

161 Sussex Street, Sydney NSW 2000
 King & Sussex Rooms



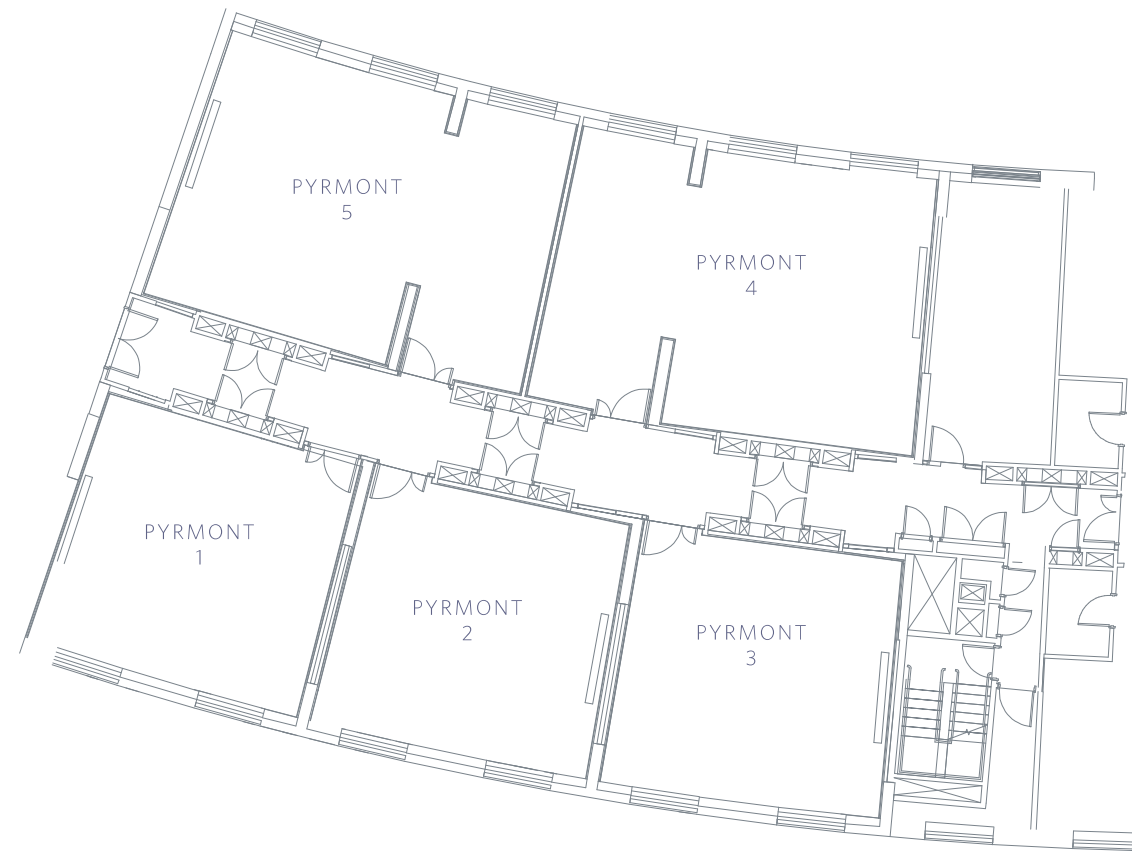
HYATT REGENCY
SYDNEY

PYRMONT
ROOMS



Pymont Rooms

161 Sussex Street, Sydney NSW 2000
Level One



Offers guests a meeting room or breakout space, whether it be for a board meeting or classroom style set up.

Pymont 1

Theatre: 40
Classroom: 18
U-Shape: 18
Cabaret: 32
Boardroom: 18

Pymont 2

Theatre: 40
Classroom: 18
U-Shape: 18
Cabaret: 32
Boardroom: 18

Pymont 3

Theatre: 40
Classroom: 18
U-Shape: 18
Cabaret: 32
Boardroom: 18

Pymont 4

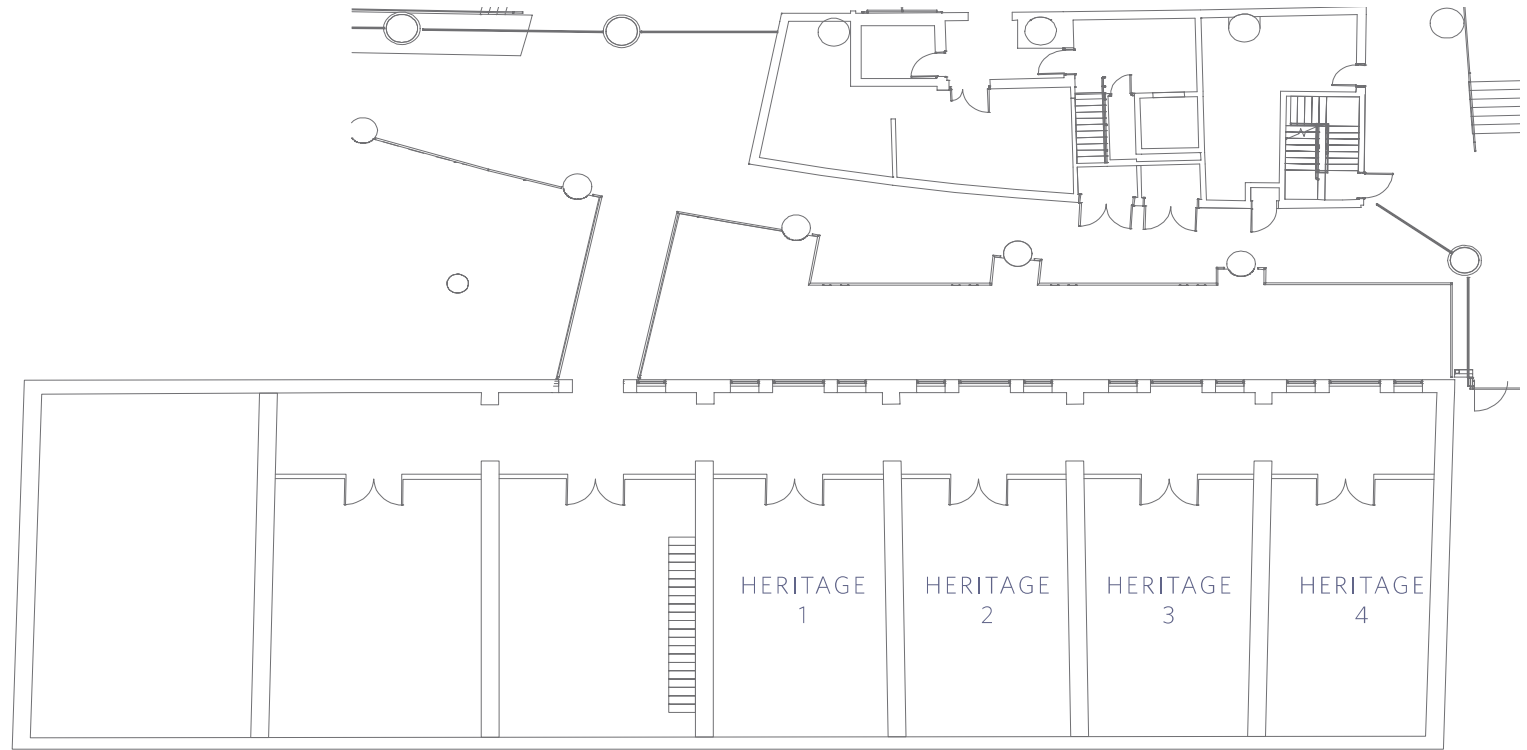
Theatre: 50
Classroom: 24
U-Shape: 21
Cabaret: 32
Boardroom: 20

Pymont 5

Theatre: 50
Classroom: 24
U-Shape: 21
Cabaret: 32
Boardroom: 20



HERITAGE
ROOMS



Offering delegates a relaxed, unique setting for meetings and corporate occasions.



Heritage Rooms

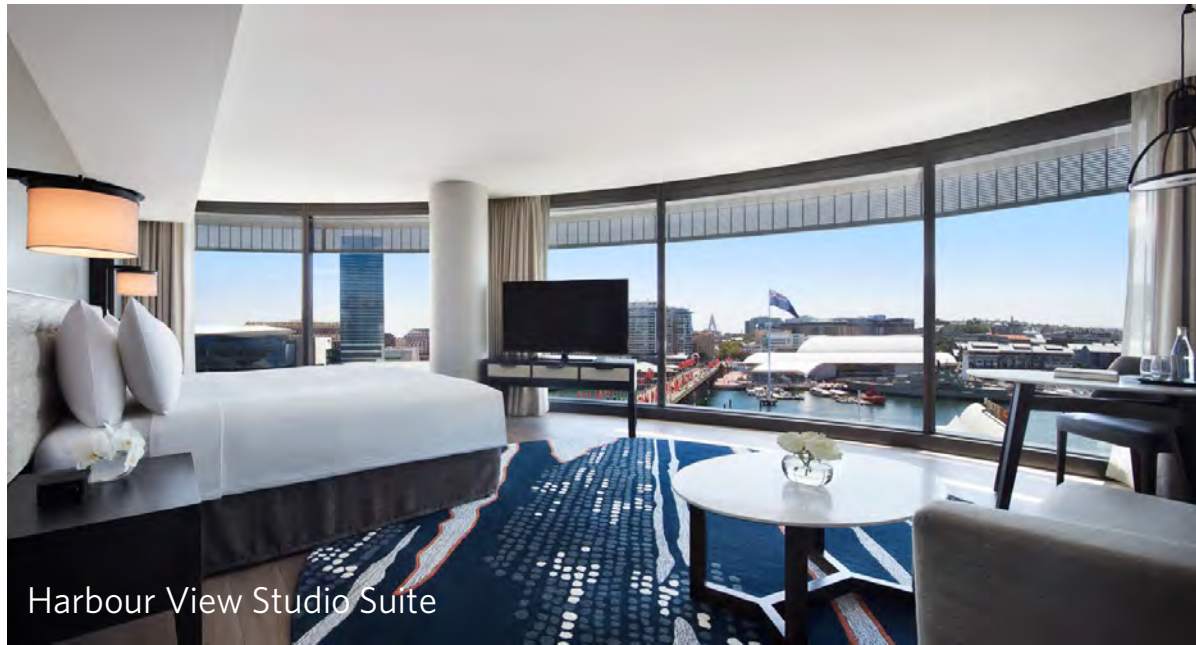
161 Sussex Street, Sydney NSW 2000
Lobby Level

Heritage 1	Heritage 2	Heritage 3	Heritage 4	Heritage Atrium
Theatre: 60	Theatre: 60	Theatre: 60	Theatre: 60	Cocktail: 175
Classroom: 30	Classroom: 30	Classroom: 30	Classroom: 30	Boardroom: 100
U-Shape: 21	U-Shape: 21	U-Shape: 21	U-Shape: 21	
Rounds of Ten: 40	Rounds of Ten: 40	Rounds of Ten: 40	Rounds of Ten: 40	
Cocktail: 60	Cocktail: 60	Cocktail: 60	Cocktail: 60	
Cabaret: 32	Cabaret: 32	Cabaret: 32	Cabaret: 32	
Boardroom: 20	Boardroom: 20	Boardroom: 20	Boardroom: 20	
				Upper Deck
				Cocktail: 200



GUESTROOMS

AND SUITES



Harbour View Studio Suite



Regency Executive Suite



Harbour View Executive Suite



Harbour View Balcony Suite



Harbour View King



City View Twin



Harbour View Twin



City View King

NEW TERRACE SUITES



Regency Terrace Suite and Sydney Terrace Suite

A rarity in Sydney with outdoor space overlooking Darling Harbour, two stylish and lavish suites with adjoining terraces have been introduced to the diverse collection of accommodation options.

Perfect for entertaining, each light filled, lavish suite offers 125 square metres of space including a king bedroom with ensuite bathroom, separate living and work areas, butler's pantry and an intimate dining area for six people. A highlight is the 34 square metres terrace with panoramic waterfront views of Darling Harbour, perfect for hosting intimate parties for up to 12 guests.

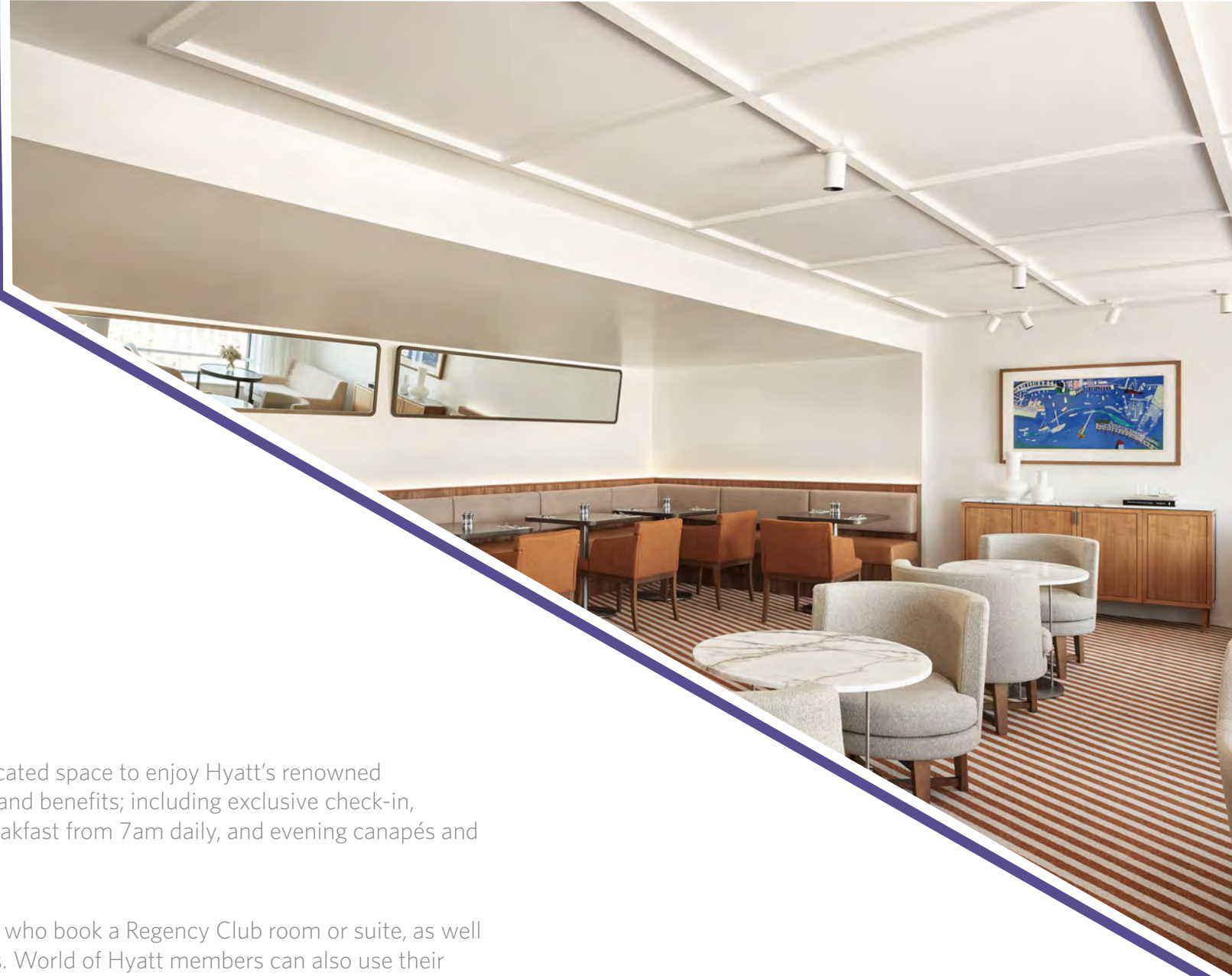


NEW REGENCY CLUB

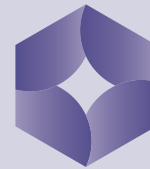
Regency Club

Nestled on the eleventh floor, the chic club offers a sophisticated space to enjoy Hyatt's renowned personalised service and comes with a myriad of privileges and benefits; including exclusive check-in, dedicated concierge service, complimentary continental breakfast from 7am daily, and evening canapés and complimentary beverages from 5:30pm - 7:30pm daily.

Hyatt Regency Sydney's Regency Club is available to guests who book a Regency Club room or suite, as well as World of Hyatt Globalist and Lifetime Globalist members. World of Hyatt members can also use their points to upgrade to a Regency Club room or suite, treating themselves to a seriously swanky stay.







HYATT
REGENCY™

SYDNEY

HYATT REGENCY SYDNEY

161 Sussex Street
Sydney, NSW 2000, Australia
hyattregencysydney.com

For enquiries please contact: +61 2 8099 1234
or email sydney.regency@hyatt.com

