



HYATT HOTEL CANBERRA

HYATT HOTEL CANBERRA



Luxury is PERSONAL

WELCOME

A very warm welcome to Hyatt Hotel Canberra - a Park Hyatt Hotel, overlooking Lake Burley Griffin. It is our sincere wish that you find in our hotel the warmth, friendliness and service that makes your stay both enjoyable and memorable.

To assist you, we offer a wide range of services and facilities which are outlined in this directory. We hope these services will be of benefit during your visit, and wish you a very pleasant stay in Canberra.

HISTORY

Historic Hyatt Hotel Canberra, is where vintage elegance has welcomed guests since 1924. This iconic hotel has for many years played an important part in Canberra's social and political life. As one of the first public structures to be built in the new capital, Hyatt Hotel Canberra offered premier accommodation for visitors to our fledging city. Today, more than 90 years later, Hyatt Hotel Canberra once again takes pride of place as Canberra's finest home away from home, offering travellers a unique blend of history combined with modern excellence.

Built in the Prairie style of Frank Lloyd Wright, the hotel's mystique is enhanced by stories of eminent visitors, power brokers and indeed Prime Ministers, all of whom made many political decisions within its illustrious walls.

The hotel's 252 rooms, including 13 suites and exclusive Ambassador Club Rooms are set amid five hectares of landscaped grounds overlooking Lake Burley Griffin within the government and diplomatic enclaves of the national capital.



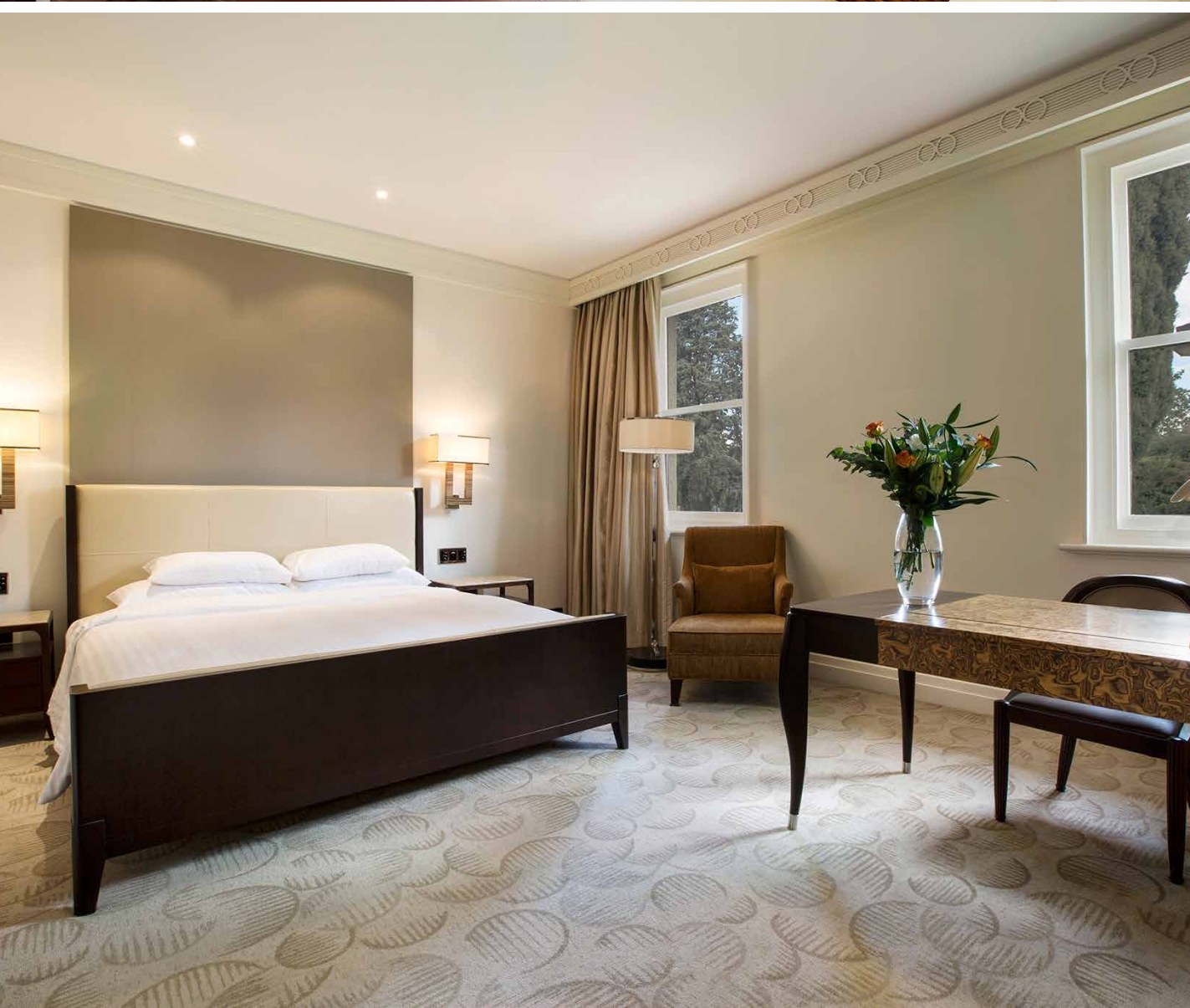
Rooms & **SUITES**

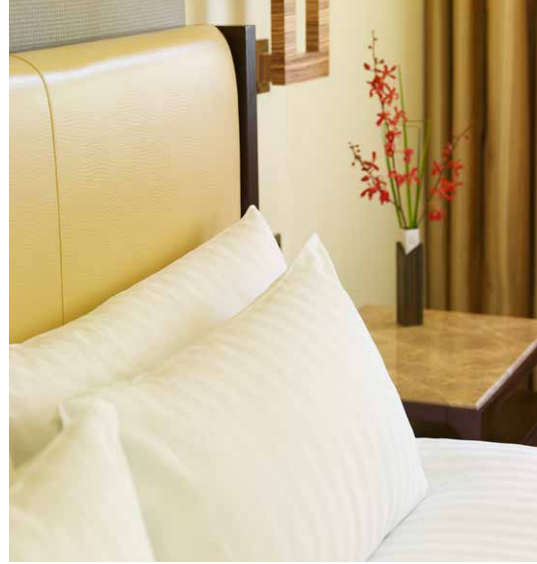
SERVICES

- Free Wi-Fi
- Spacious marble bathrooms with a deep, luxurious bathtub
- Separate glass-walled shower cubicle
- **The Clubhouse at Hyatt Hotel Canberra**
A comprehensive fitness centre offering a fully equipped gymnasium, personal trainers & massage Synthetic grass, floodlit tennis court
- The Promenade Cafe
- Indoor pool offering aqua aerobics classes, spa, sauna
- 24 hour room service
- Multilingual hotel staff
- Foreign currency exchange
- Babysitting service (upon request)

AMBASSADORS LOUNGE

Club Room guests enjoy access to the Ambassador Lounge, offering evening drinks and canapés and an extensive continental breakfast each morning. All day access to the Ambassador Lounge for Club Room guests makes an ideal place to work or relax with coffee and tea available.





Room Types

PARK KING / TWIN ROOM

Luxurious 41-sq.-metre art deco interiors feature one king size bed or two king single beds, sitting area and generous work desk.

PARK DELUXE KING / TWIN ROOM

Heritage-inspired 41-sq.-metre rooms reflect the original 1920's section of the hotel with traditional furniture styles and custom carpet patterns interpreted in a modern context.

CLUB KING / TWIN ROOM

Magnificent views of parks and gardens welcome you to a 41-sq.-metre room, including king bed or two single beds.

PARK BALCONY KING

Luxurious 41-sq.-metre rooms that enjoy landscaped garden and park views from the furnished balcony.

CLUB DELUXE KING ROOM

A 77-sq.-metre room, with separate sitting area and a view of parks and gardens.

PARK SUITE

Views of parks and gardens welcome you to an 82-sq.-metre suite including entry foyer, separate sitting area, two Italian black marble bathrooms.

DIPLOMATIC SUITE

Luxurious 240-sq.-metre suite has two balconies offering views of landscaped gardens and parks. Enjoy a spacious lounge, dining room, kitchenette with butler entrance, generous work area. These suites are located within the Heritage section of the hotel.

PRESIDENTIAL SUITE

Entertain lavishly in a 310-sq.-metre suite featuring marble entry foyer opening onto a stunning lounge area featuring fireplace, baby grand piano, two private balconies overlooking gardens and Lake Burley Griffin, bar, kitchenette and formal dining room for twelve.



Dining & ENTERTAINMENT



THE PROMENADE CAFE

At Promenade Cafe you'll experience the region's finest local produce every day for breakfast, lunch and dinner, especially fresh Australian seafood.

With an abundance of natural light and garden views, the Promenade Café offers a relaxing and refreshing ambience with a variety of dining options. Whether you are discussing business or enjoying a leisurely lunch, the Promenade Café provides an ideal setting.

Treat yourself to a delicious selection from our extensive breakfast, lunch and dinner buffets or, if you prefer, from our a la carte menu.

All Day Menu Available 6:30am to 10:30pm

Breakfast: 6:30 am to 10:30am

Lunch: 12:00 noon to 2:30pm

Dinner: 6:00pm to 10:30pm

THE TEA LOUNGE

The Tea Lounge is the perfect place to enjoy afternoon tea or a light lunch while taking in the vibrant activity of the hotel. The finest estate leaf teas are served, together with a full selection of espresso coffees, juices and an extensive wine list.

Indulge in the famous afternoon tea buffet Friday to Sunday with an array of savouries, finger sandwiches, freshly baked scones, jam and cream, and a selection of tempting cakes and slices. Afternoon Tea in the heritage listed Tea Lounge is an established tradition at Hyatt Hotel Canberra. A light meal menu is available throughout the day.

Afternoon Tea is the ideal occasion to celebrate and elegant birthday, baby or bridal shower. Our dedicated chefs can even make a special menu for vegetarians or guests requiring a gluten free high tea.

All Day Menu Available

Monday to Friday: 8:30am to 10:00pm

Saturday and Sunday: 10:00am to 10:00pm

Afternoon Tea buffet

Friday 2:30pm to 5:00pm

Saturday and Sunday: 11:00am to 1:30pm

and 2:30pm to 5:00pm

SPEAKERS CORNER BAR & GRIFFIN'S

Canberra's most historic bar Club, wood-panelled, subdued – Speaker's Corner Bar is quintessential Canberra – everything you'd expect from an establishment that has hosted Australia's power set for generations. On any night, you're likely to spot politicians mixing with out-of-towners.

Opposite the reception area, Speakers Corner Bar offers a warm, friendly and intimate atmosphere. Steeped in tradition, it is a great place to relax by the open fire during winter.

Experience our superb range of ales, wines and cocktails while enjoying the nostalgia of days gone by. In the warmer months, take your drinks out to the sunny courtyard and enjoy the garden surrounds.

For groups of up to 40, we can offer exclusive use of Griffin's, the cosy retreat beside Speaker's Corner Bar, to create a private VIP drinks area. This unique venue lends itself well to a stand alone cocktail function, or the perfect great space to entertain VIP's pre or post a gala dinner.

Monday to Thursday: 5:00pm until midnight

Friday to Saturday: 3:00pm to 1:00am

Sunday: 5:00pm to 10:00 pm



The CLUBHOUSE



Just metres from Lake Burley Griffin, and a short walk from Parliament House and the embassy district, The Clubhouse is known for its outstanding services and facilities for both in-house guests and local members.

The Clubhouse offers a range of exercise, relaxation and revitalization options. Full sized synthetic grass, floodlit tennis court and recreational bicycles. Indoor heated 15-meter pool with spa and sauna.

GYM

The Clubhouse offers a range of exercise options. Fully fitted out with cardio equipment by Technogym, offers an innovative workout platform, LCD screen entertainment systems, internet connectivity, touch screen technology and personalised wellness system.

The Strength Studio is equipped with resistance training equipment to improve your physical movement and cardiovascular fitness.

Personal Training is also available upon request, starting from \$75 for an hour session.

MASSAGE

The Clubhouse offers a range of therapeutic massage treatments in the comfort of a specially modified room within the fitness centre. To make an appointment, to purchase a gift certificate or for more information

Massage Therapy Prices:
 Guest \$90 (60 mins)
 In-Room \$110 (60 mins)

Contact The Clubhouse for prices on shorter and longer massage appointments.

BIKES

Hotel Guests \$20 per hour / \$30 per day
 Your hire includes a helmet, bike lock & map
 Baby seats and children's bikes are also available

TENNIS

Hotel Guests \$15 per hour / \$6.50 per 30 mins
 Your hire includes use of racquets and tennis balls

GROUP FITNESS

A diverse range of group fitness classes are complimentary for in-house guests, including: Aqua Aerobics, Yoga & Pilates and Boot Camp to name a few.

THE CLUBHOUSE OPENING HOURS

Monday to Friday
 6:00 am to 9:00 pm

Saturday, Sunday and Public Holidays
 7:00 am to 8:00 pm

Speak to The Clubhouse team or Concierge for the weekly timetable of classes when you are staying.



Meetings & **EVENT SPACES**

MEET WHERE DECISIONS HAVE BEEN MADE FOR
90 YEARS.

Meet where decisions have been made for 90 years. With a tradition of service excellence, Hyatt Hotel Canberra invites guests to experience a variety of facilities that are designed to impress and delight. Guests will be immersed in the hotel's long history but complemented by today's technology and an impressive range of cuisine options, locally sourced where possible and thoughtfully prepared. Hyatt Hotel Canberra has the space and flexibility to cater for a cocktail reception for 600, a dinner for 340, an elegant wedding reception, or an intimate dinner for 15. Hyatt Hotel Canberra has a venue to meet the needs of any occasion.



Event Venues

FEDERATION BALLROOM

The Federation Ballroom is a classically designed, highly versatile venue with a high ceiling. Accommodating 340 for a sit-down banquet, it can be divided into two spaces for smaller events. The Ballroom is ideal for gala dinners, concerts, large presentations, road-shows, car launches, and cocktails for up to 600.

CENTENARY BALLROOM

The Centenary Ballroom is a richly decorated, opulent room. It exudes elegance and style, making it one of Canberra's most exquisite venues for a glamorous cocktail party for 220 or an elegant wedding reception for 180.

CANBERRA ROOM

The Canberra Room can be divided into three smaller rooms, all of which open on to the attractive garden, the Ambassador's Courtyard. This versatile venue is ideal for board meetings, dinners, presentations, and wedding receptions, and as a conference breakout room. Refreshments can be enjoyed in the privacy of the Ambassador's Courtyard.

ASSEMBLY ROOM

This is an intimate meeting room ideal for seminars and private dinners, holding up to 40 people.

THE GALLERY

Conveniently located adjacent to the Federation Ballroom, The Gallery is perfect for pre-function gatherings or as exhibition space for larger conferences.

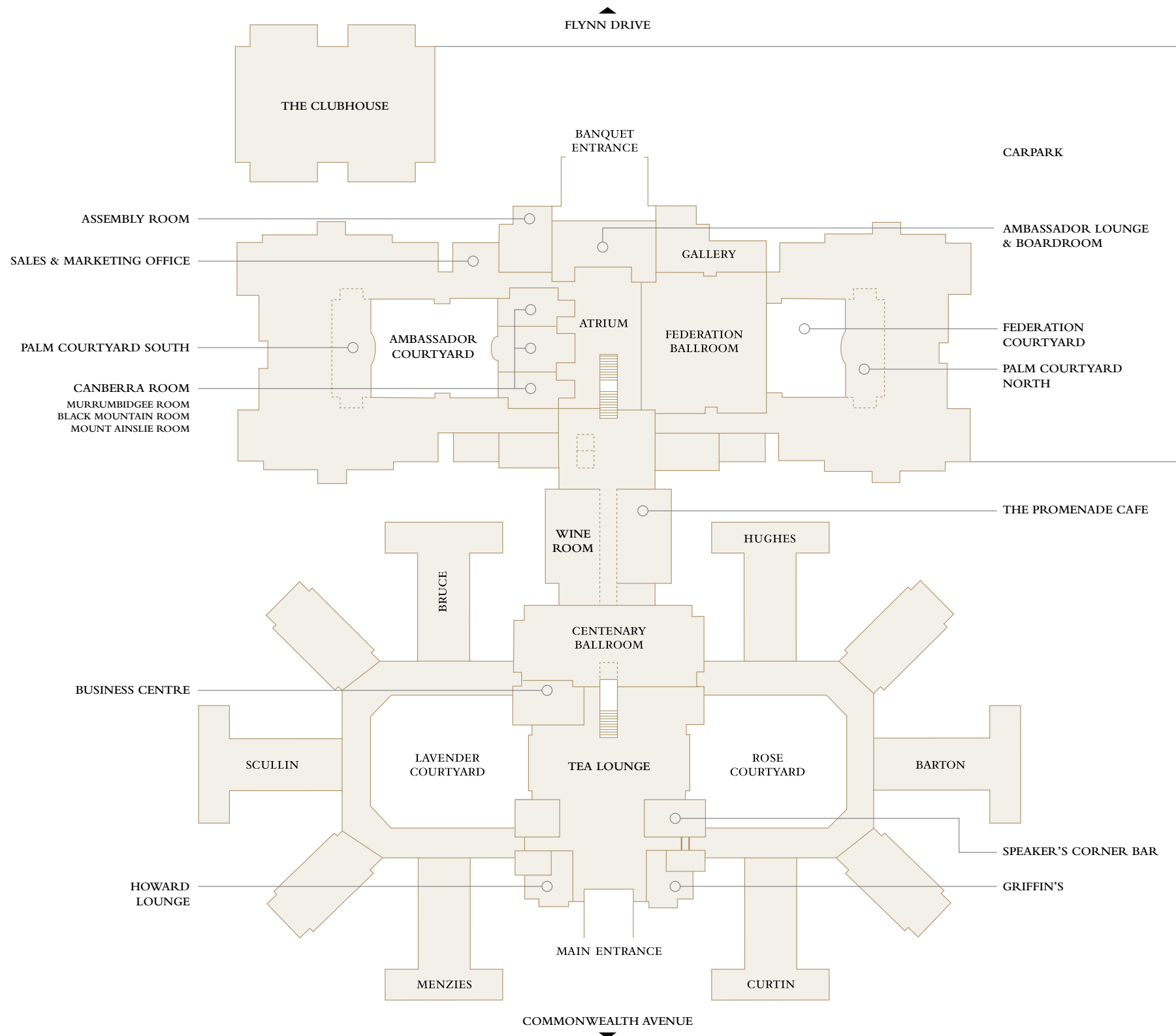
OUTDOORS

Hyatt Hotel Canberra offers a range of outdoor spaces; terraces, verandahs and gardens of varying sizes for events at the hotel. These areas are suitable for mid-size gatherings, social events, and weddings, providing guests an opportunity to be entertained in a laid-back manner with the finest selection of food and wine.

The Rose Courtyard and Lavender Courtyard are suitable for up to 250 guests to experience a gourmet barbecue accompanied by a wide range of seafood, salads and exquisite desserts.

ROOM NAME	DIMENSIONS <i>L x W x H</i>	SQUARE METRES	BANQUET	RECEPTION	THEATRE	CLASSROOM	BOARDROOM	U-SHAPE	HOLLOW SQUARE	CONFERENCE
										
Centenary Ballroom	44m x 8m x 2.5m	352	180	220	200	132	—	—	—	144
Centenary 1 or 2	15m x 8m x 2.5m	120	60	100	60	42	30	25	25	48
Centenary Centre	14m x 8m x 2.5m	98	50	60	60	42	20	20	25	40
Centenary Prefunction	15m x 10m x 2.5m	135	—	80	—	—	—	—	—	—
Federation Ballroom	18.9m x 26.7m x 5.5m	504	340	600	500	228	—	80	100	256
Federation Ballroom North	13.25m x 18.9m x 5.5m	250	150	220	220	108	—	60	80	96
Federation Ballroom South	13.25m x 18.9m x 5.5m	250	140	200	180	102	—	50	60	112
The Gallery	10.7m x 20.5m x 3m	252	80	150	100	—	—	—	—	—
The Canberra Room	19m x 9.9m x 2.8m	189	120	180	150	100	50	48	60	96
Black Mountain Room	6.25m x 9.9m x 2.8m	62	40	50	50	25	22	21	24	32
Mount Ainslie Room	6.25m x 9.9m x 2.8m	62	40	50	50	25	22	21	24	32
Murrumbidgee Room	6.25m x 9.9m x 2.8m	62	40	50	50	25	22	21	24	32
The Assembly	8.7m x 8.7m x 3m	76	40	50	50	35	24	24	24	32
Lavender Courtyard	26.3m x 27.3m	—	250	300	—	—	—	—	—	—
Rose Courtyard	—	—	250	300	—	—	—	—	—	—
Palm Courtyard North	—	—	80	—	—	—	—	—	—	—
Palm Courtyard South	—	—	80	—	—	—	—	—	—	—
Howard Lounge	—	—	—	40	—	—	—	—	—	—
Wine Room	—	—	—	—	—	—	20	—	—	—

Room dimensions & CAPACITIES



Floor PLAN



WEDDINGS

VINTAGE ELEGANCE HAS WELCOMED GUESTS SINCE THE 1920S AT HYATT HOTEL CANBERRA.

This iconic hotel has for many years played an important part in Canberra's social life, in particular as a setting for weddings. No matter how big or small, organising a wedding involves hours of preparation and careful planning. Our wedding team works enthusiastically to ensure your big day is a memorable and enjoyable experience. If you're looking for a wedding ceremony or reception venue, Hyatt Hotel Canberra has many options to suit your taste and budget.



Your Special Day

CEREMONY

Depending on the size of your wedding, we can offer a range of indoor and outdoor spaces; terraces, verandahs and gardens. For example, you might consider first the Lavender Courtyard, in the heritage section of the hotel, a sought after spot for ceremonies and receptions.

CULTURAL CEREMONIES

Hyatt Hotel Canberra offers a highly personalised experience from start to finish. We understand the cultural diversity for all our guests. Ensuring we bring the magic of your wedding day to life. No matter what part of the globe your traditions and customs are from.

Our tailor-made packages are designed to suit a range of wedding styles and, additionally, our talented team of international chefs can cater for a range of ethnic cuisines, including those of many European countries, India, various Asian and Middle Eastern nations.

RECEPTION

The Centenary Ballroom is one of Canberra's most exquisite venues. Located in the hotel's original section, this stylish ballroom is decorated in rich burgundy and buttery yellow with elegant fireplaces at both ends and a polished wooden dance floor in the centre.

For large receptions the Federation Ballroom is ideal, hosting up to 340 people. It is in keeping with the hotel's Art Deco design with high ceilings and lavish light fittings, while still maintaining a sense of modernity.

ACCOMMODATION

We are delighted to offer a special rate to guests attending a wedding celebration at the hotel.

PERSONALISED SERVICE

You've imagined every detail, we'll make it a reality, let our wedding specialists cater to your every need. Our beautiful heritage styled setting and luxurious surrounds offer the perfect backdrop for your special day. Gather your guests and create lasting memories at Hyatt Hotel Canberra.

Start by contacting our dedicated wedding planner who will help create an unforgettable day for you and your guests.



Experience CANBERRA

AUSTRALIA'S NATIONAL ATTRACTIONS

There's no better place to discover the Australian story than in Australia's capital, Canberra. At the **National Museum of Australia** you will find an eclectic mix of Australiana from the unusually large heart of legendary racehorse Phar Lap to the Holden Prototype No.1. Visit the **National Gallery of Australia** to view Australia's national art collection, which has more than 165,000 works and includes the world's largest collection of Indigenous Australian artwork. See where Australia's political decisions are debated and decided at **Parliament House**, and hear the stories of the people and events that have shaped the nation at the **Australian War Memorial**. One of Australia's most loved buildings is changing, visit **Old Parliament House** today and you will find that there is always something new to discover.

Explore the world's greatest collection of material relating to Australia and the Australian people at the **National Library of Australia**. Next door is Questacon – The National Science and Technology Centre, where you can wrap your mind around some intriguing questions. Finally the National Portrait Gallery, see the portraits of over 400 people who've shaped the nation at the National Portrait Gallery. Be amazed at the works of art reflecting Australia's history, diversity and culture.



CANBERRA OUTDOOR & ADVENTURE

Explore the major landmarks around Canberra's Lake Burley Griffin from land or water. The central basin is a hub of activity, especially in the warmer months. Get active with rowing, sailing, kayaking, canoeing and paddle-boating. A fun way to get around the lake is on a guided segway tour with Seg Glide Ride located Commonwealth Park.

Display on the southside of the lake. You can also hire sailing boats from the Canberra Yacht Club or paddleboats, kayaks, surf skis and canoes from Lake Burley Griffin Boat Hire or Row 'n' Ride.

CAPITAL COUNTRY WINE

You'll find more than 30 boutique cellar doors within 35 minutes drive of the city. Small enough to have an intimate cellar door experience and meet the winemaker, yet large enough to find all the varieties of a premium wine growing region, Canberra District wineries have much to offer.



Canberra

ANNUAL GUIDE

Every year Canberra plays hosts to a range of exciting major events and festivals.

January	Australia Day Celebrations & Concert Summernats, Motoring Festival
February	National Multicultural Festival Royal Canberra Show Agricultural Show Tropfest, Short Film Festival
March	Canberra Festival, a Celebration of Canberra Enlightened Canberra Balloon Fiesta, Spectacular Hot Air Balloon Festival Skyfire Fireworks Display
April	National Folk Festival Canberra International Chamber Music Festival
June	Rally of Canberra, Rally Car Race
July	Truffle Festival
August	Australian Science Festival
September	Floriade, Spring Festival
October	Oktoberfest, German Beer Festival Canberra Short Film Festival
November	DESIGN Canberra, promoting Canberra's vibrant and diverse design community Canberra Festival of Cycling Classical Jazz and Ragtime Festival Tuggeranong Festival Foreshore, two-day music festival in the Parliamentary Triangle
December	New Year's Eve celebrations, fireworks the shores of Lake Burley Griffin

HYATT HOTEL CANBERRA™

A PARK HYATT HOTEL

LUXURY *is* PERSONAL

120 Commonwealth Avenue,
Canberra, Australian Capital Territory, 2600
canberra.park.hyatt.com

T. +61 2 6270 1234

HYATT HOTEL CANBERRA